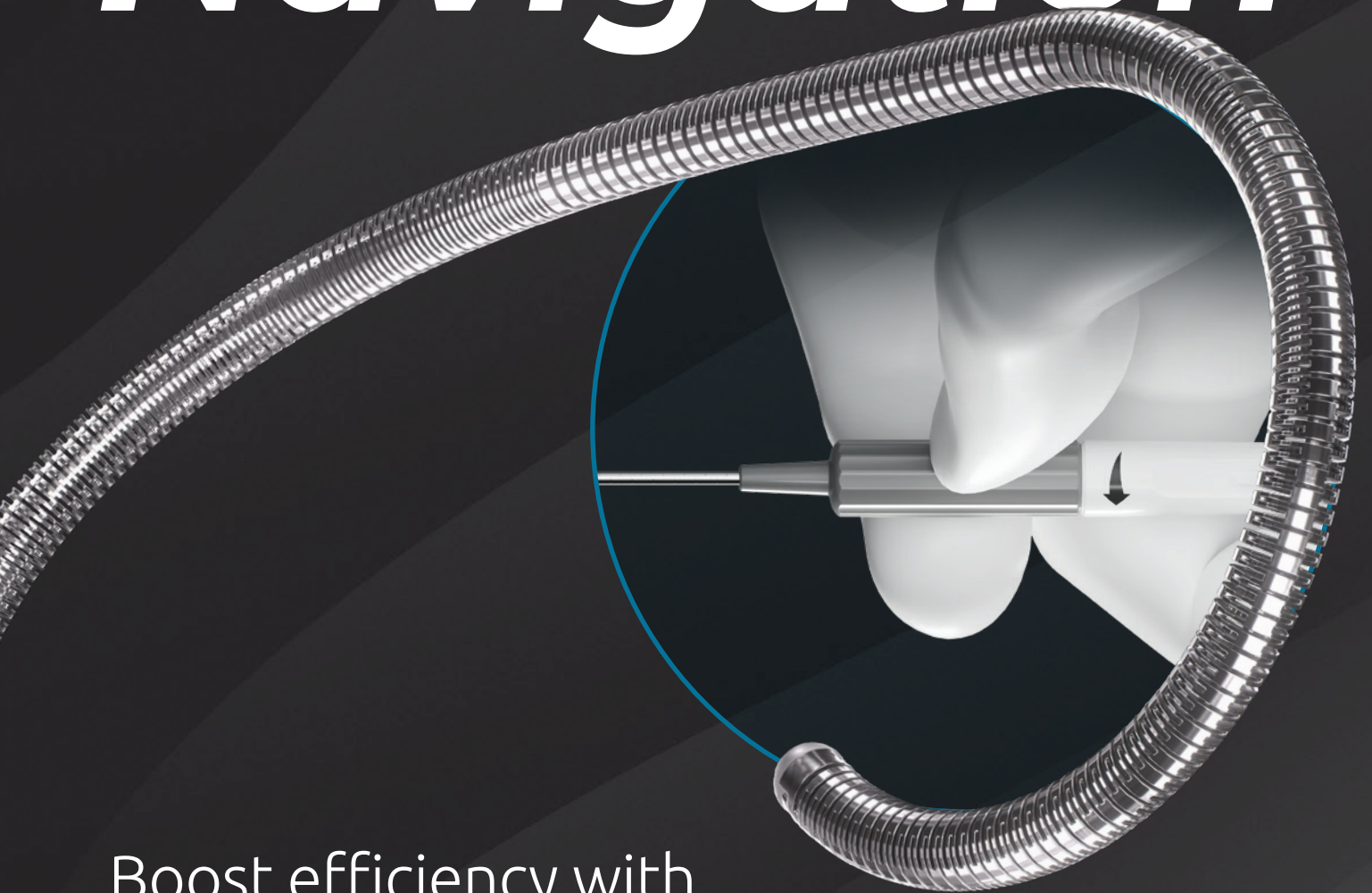


# *RESHAPE* *Navigation*



Boost efficiency with  
**robust support, dynamic control,**  
**and consistent trackability.**

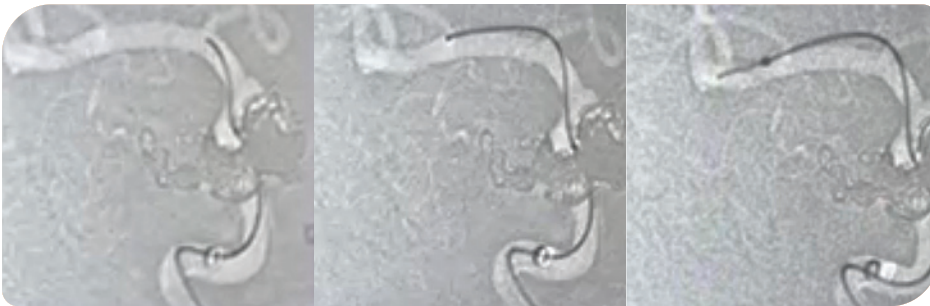
Achieve **precise navigation** with on-demand steerability.



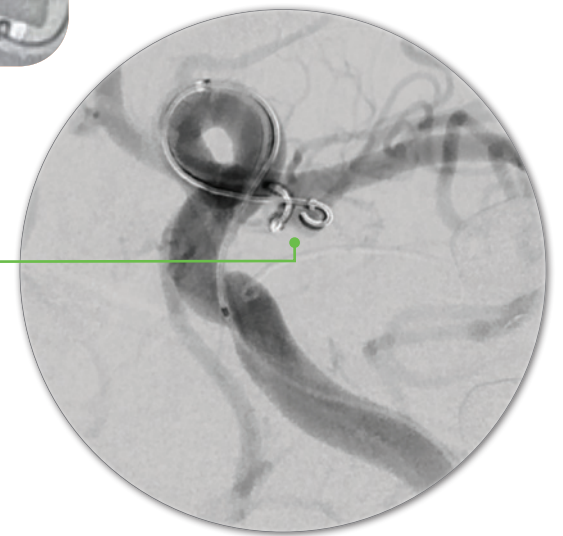
**RETAIN SHAPE RELY ON SUPPORT**  
for swift navigation and aspiration



**ACCELERATE ACCESS** with enhanced trackability



**Easily access vessels with CONTROLLED TIP DEFLECTION**



“ I saved about **45 minutes of frustration and futility**, quickly accessing an artery arising at **difficult 180-degree angle** on the first attempt.

– Dr. Jeremy Rempel, University of Alberta

**ORDERING INFORMATION**

OD (in)	Effective Length (cm)	Radiopaque length (cm)	Fluorosafe length (cm)	Length from distal end to fluorosafe marker (cm)	Distal tip length (mm)	Tip bend diameter Drive Loop shape (mm)	Tip bend diameter – J shape (mm)	Hydrophilic coating length (cm)	Microcatheter ID compatibility (in)
0.024	192	40	5	100	15.7	5	10	42	0.027"

Catalog Number: **GWPP2422**

**Indications for Use**

The DriveWire 24 Guidewire is intended for general intravascular use, including the neuro and peripheral vasculature. The DriveWire 24 Guidewire is intended to facilitate the selective placement of diagnostic or therapeutic catheters. This device is not intended for use in the coronary arteries.

**Contraindications**

DriveWire 24 Guidewire is contraindicated for patients with known hypersensitivity to nickel-titanium.

All third-party product, company names and logos are trademarks™ or registered® trademarks and remain the property of their respective holders.

GWGE6499\_03

©2025 Rapid Medical. All rights reserved.

info@rapid-medical.com  
rapid-medical.com

Distributed by  
**KARDIA**  
ASAHI INTECC Group

Kardia Srl  
Via Caramon, 18  
20151 Milano - Italy  
www.kardia.it

**RAPID MEDICAL™**