

**ADJUSTABLE REMODELING MESH**

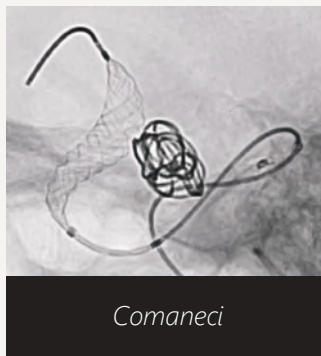
- Continuous blood flow
- Highly radiopaque, Fully visible
- Single hand control

|                | Diameter        | Compatibility           | Net Length | Cat. No. |
|----------------|-----------------|-------------------------|------------|----------|
| COMANECI       | 1.5 mm - 4.5 mm | 0.021" ID microcatheter | 32 mm      | ANPP3177 |
| COMANECI Petit | 1.5 mm - 3.5 mm | 0.021" ID microcatheter | 24 mm      | ANPP3188 |
| COMANECI 17    | 0.5 mm - 3 mm   | 0.017" ID microcatheter | 22 mm      | ANPP3199 |



*Comaneci Petit*

Image courtesy of:  
Prof. Remonda and  
Dr. Diepers Kantonsspital Aarau,  
Switzerland



*Comaneci*

Image courtesy of:  
Prof. Chapot Alfried Krupp  
Krankenhaus, Essen, Germany



*Comaneci 17*

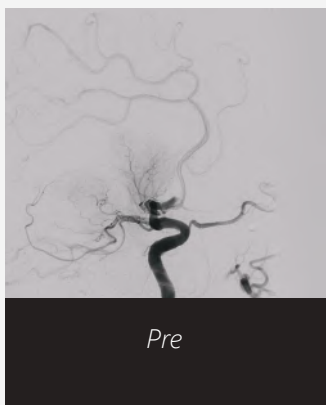
Image courtesy of:  
Prof. Patrick Courtheoux  
CHU de Caen, France

**ADJUSTABLE CLOT RETRIEVER**

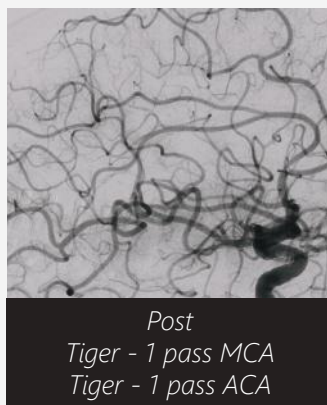
- Highly radiopaque, Fully visible
- Controllable diameter
- Superior Radial Force

|                 | Diameter        | Compatibility                   | Net Length | Cat. No. |
|-----------------|-----------------|---------------------------------|------------|----------|
| TIGERTRIEVER    | 1.5 mm - 6 mm   | 0.021" ID microcatheter         | 32 mm      | TRPP3155 |
| TIGERTRIEVER 13 | 0.5 mm - 2.5 mm | 0.016"/ 0.013" ID microcatheter | 20.5 mm    | TRPP3144 |
| TIGERTRIEVER 17 | 0.5 mm - 3 mm   | 0.017" ID microcatheter         | 23 mm      | TRPP3166 |

Example case: 71 year old female, MCA & ACA occlusion treated with Tigertriever



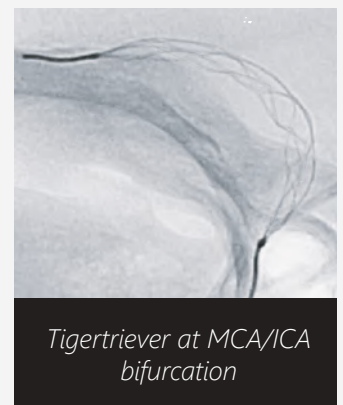
*Pre*



*Post  
Tiger - 1 pass MCA  
Tiger - 1 pass ACA*



*Retrieved clots (MCA  
and ACA)*



*Tigertriever at MCA/ICA  
bifurcation*

Images courtesy of: Prof. Chapot Alfried Krupp Krankenhaus Essen, Germany

 **RAPIDMEDICAL**

# NEVER TOO FAR...



**TIGERTRIEVER13**  
Adjustable Clot Retriever