

ASAHI Corsair Pro XS

Simplify Retrograde Complexity

The new SHINKA-Shaft increases device performance by maintaining flexibility and durability



Catalogue No.	Outer Diameter			Inner Diameter		Usable Length	Recommended GW
	Tip	Distal Shaft	Proximal Shaft	Tip	Shaft		
CSR135-21S	0.44mm (1.3Fr)	0.71mm (2.1Fr)	0.95mm (2.9Fr)	0.38mm (0.015 inch)	0.48mm (0.019 inch)	135cm	0.36mm (0.014 inch)
CSR150-21S	0.44mm (1.3Fr)	0.71mm (2.1Fr)	0.95mm (2.9Fr)	0.38mm (0.015 inch)	0.48mm (0.019 inch)	150cm	0.36mm (0.014 inch)



© 2020 ASAHI INTECC CO., LTD
 "ASAHI" and "Corsair Pro" are trademarks or registered trademarks of ASAHI INTECC CO., LTD. in Japan and other countries.

Manufactured by:



ASAHI INTECC CO.,LTD.

3-100 Akatsuki-cho, Seto, Aichi 489-0071 Japan
 TEL:+81-561-48-5551 FAX:+81-561-48-5552
 www.asahi-intecc.com

Distributed by:

K20231_B_LC_1.0

ASAHI Corsair Pro XS

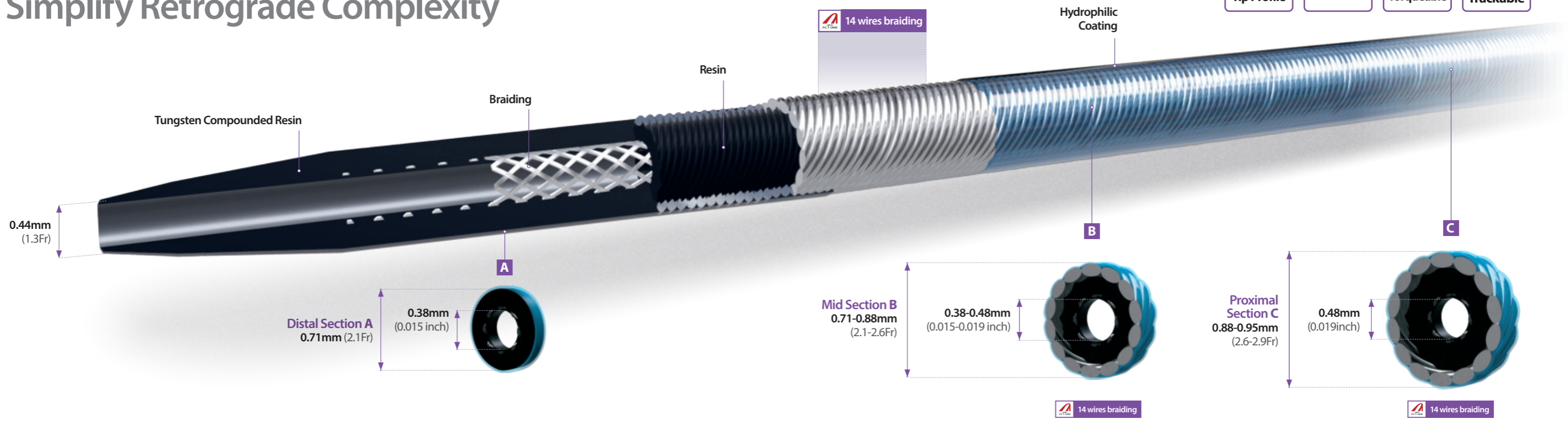
Microcatheter



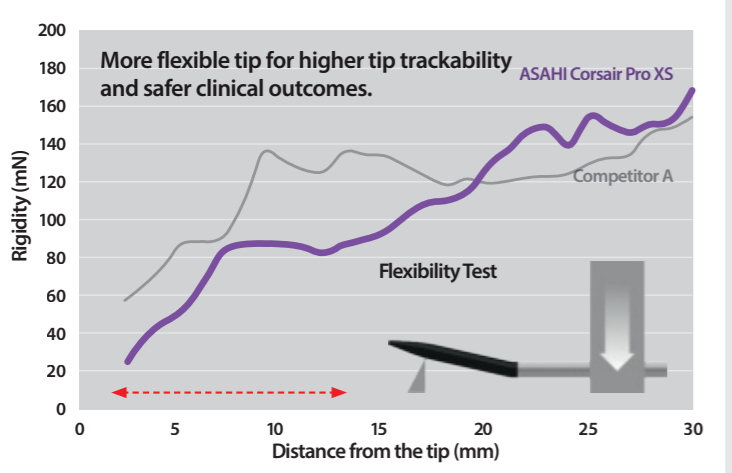
ASAHI Corsair Pro XS

Simplify Retrograde Complexity

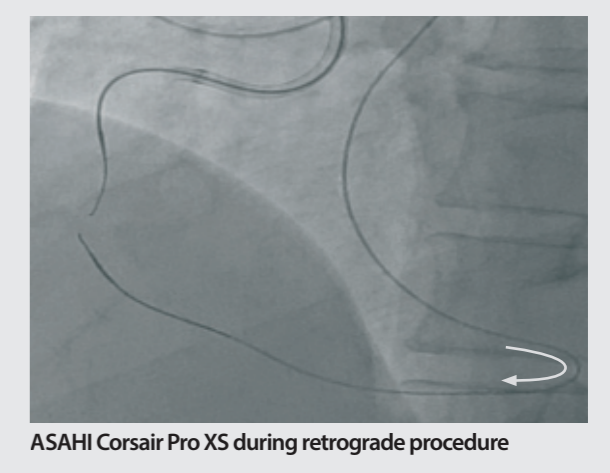
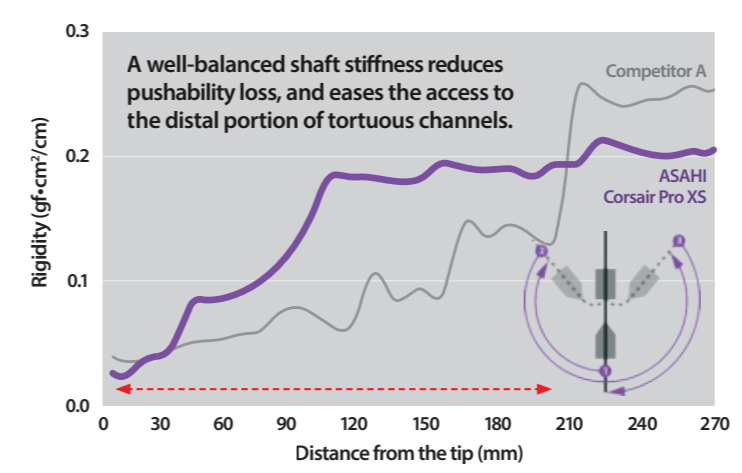
LOW Tip Profile
2.1 Fr Microcatheter
10 Torqueable
Flexible & Trackable



Tip Flexibility

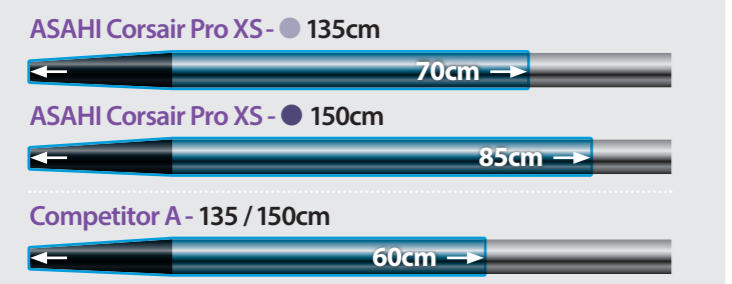


Shaft Stiffness

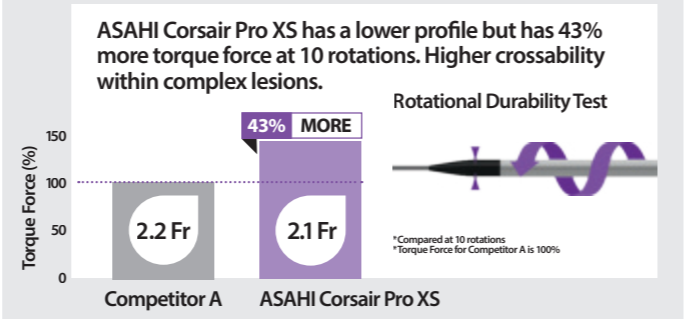


Lubricity Length

Longer and more durable hydrophilic coating for improved lubricity performance.

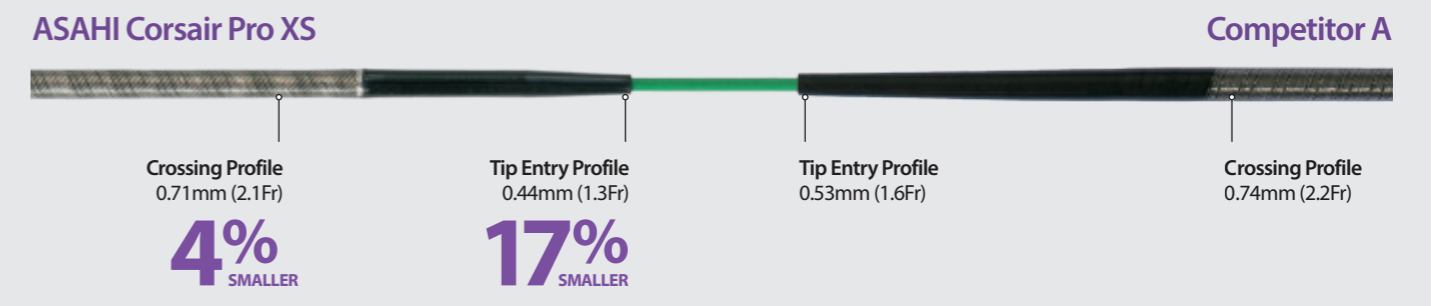


Rotational Durability



Tip Profile

Smaller tip entry profile. Lower profile and tip portion.



*All the data were obtained by company standardized test, which may differ from industry standardized tests. *All the data do not guarantee that all devices have exactly the same performance with the samples used for these tests.